

Scheme of Examinations and Promotions

CBSE CCE System

EXAMINATION REFORMS

AND

CONTINUOUS AND COMPREHENSIVE EVALUATION (CCE)

C - Continuous

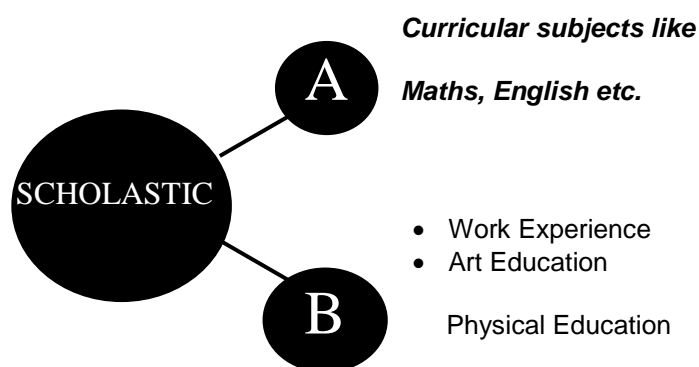
C - Comprehensive

E - Evaluation

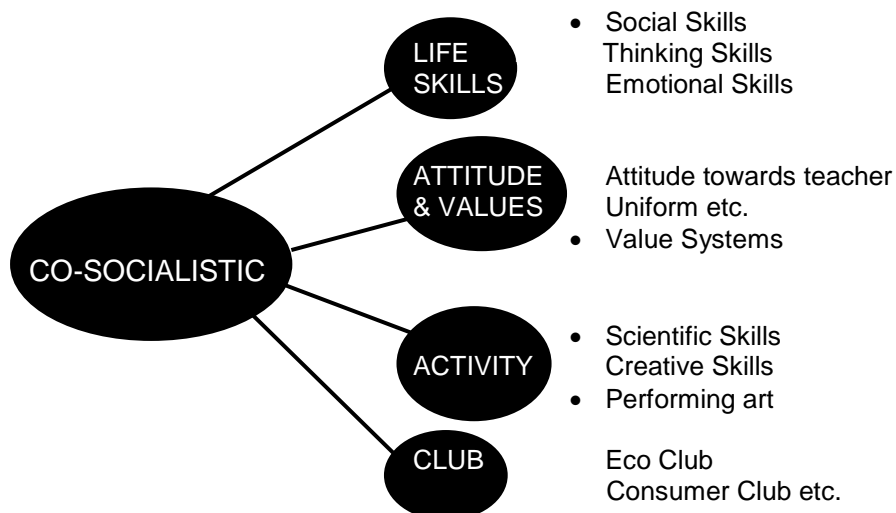
Continuous stands for the assessment of a student throughout the year, not just at the end of a term. It may be done formally or in an informal way using different techniques of evaluation. Comprehensive takes care of assessment of the all round development of a child's personality. A child will be assessed not only in terms of his knowledge about a subject but his participation in other activities also.

Broadly, we assess a child's growth in two areas - Scholastic and Co-scholastic.

The term Scholastic refers to those aspects, which are related to the intellect or the brain. It is related to the assessment of learners in curricular subjects. It includes assignments, projects, practicals etc.



The term Co-scholastic refers to those aspects which are related to hand and heart.



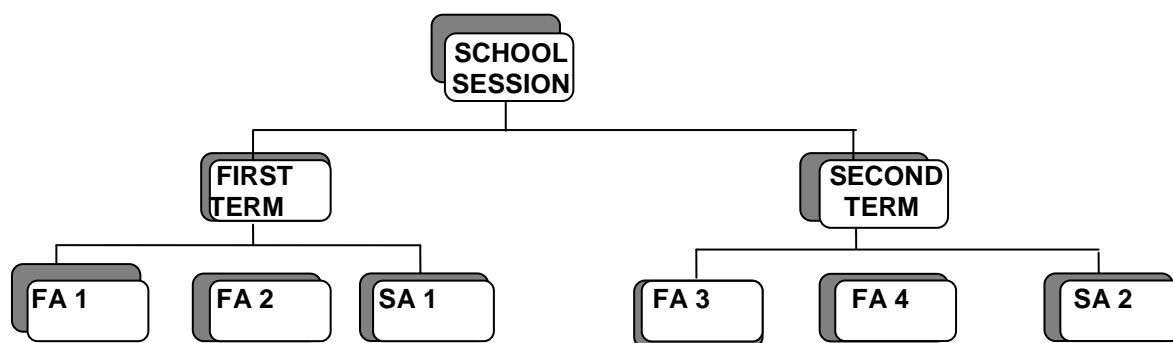
Assessment

A school session is divided into two Terms :

First Term - April to September. Second term - October to March.

Each Term has two Formative Assessments (FA) and one Summative Assessment (SA).

The syllabus covered in the first term will not be included in the second term.



Time Schedule and Weightage

First Term (50%)			
FA 1	-	April to July	10%
FA 2	-	July to Sept.	10%
SA 1	-	End of Sept.	30%

Second Term (50%)			
FA 3	-	Oct. to Dec.	10%
FA 4	-	Dec. to Sept.	10%
SA 2	-	End of March	30%

Class XI SUMMATIVE ASSESSMENT (SA)

This is the most traditional way of testing, that is a paper pen test based on the curriculum taught during the specified time period.

The centre of examination will be the child's own school.
Answer sheets will be checked by the school teachers.

GRADING SYSTEM

The performance of a child in scholastic areas will be assessed in terms of marks. Marks will be known to the student but his report card will show grades only.

PROMOTION POLICY

Students getting grades D and above are eligible for promotion to the next class.

For admissions to Class XI, guidelines laid by the CBSE are followed strictly.

Promotion to Class IX, X and XII is based on the CBSE rules.

OPTIONAL BOARD EXAM

Optional Board Exam is on demand only. Names will be forwarded by the school for the same on written request by the parents.

APTITUDE TEST

At the end of Class IX and X, CBSE offers an optional Aptitude test for all the students.

Names will be forwarded by the school for the same on written request by the parents. It is not co-related with the admission in Class XI. It is meant only to know the aptitude of your child.

PROFICIENCY TEST

PROFICIENCY TEST is an optional Exam conducted by the CBSE.

Names will be forwarded by the school on the request of parents. It is not co-related with the admission in Class XI.

CCE CERTIFICATE

After Class X, a student will be awarded a CCE Certificate by the CBSE. The certificate will include the student's profile as well as the student's Class IX performance and Class X performance in both the areas (Scholastic and Co-Scholastic).

POINTS TO REMEMBER

Students should keep the record of their achievements/participation in all the activities in or outside the school.

It is mandatory for every child to appear in both the Summative exams. If for some valid reason, the student fails to appear in any Summative exam, he/she will be given a retest. After scoring qualifying grades he/she will be promoted to the next class.